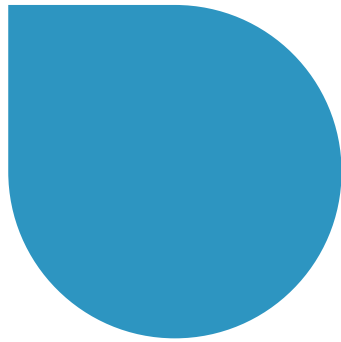
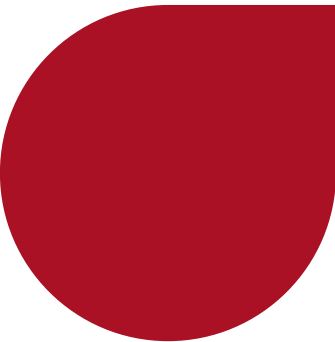




DIAGNOSTIC SOLUTIONS



CATALOGUE



DIAGAST



AUTOMATED SYSTEMS

- E.M.® Technology
- PK Range

4



POINT OF CARE

- ABD PAD®
- ABTest Card®
- Safety Card

18



MANUAL RANGE

- Manual Range
- Manual Plate

24



QUALITY CONTROLS

- Internal Quality Controls
- External Quality Controls

32

CONTACT

DIAGAST headquarters

251, avenue Eugène Avinée - 59120 LOOS - FRANCE
+33 (0)3 20 96 53 53 - contact@diagast.com

DIAGAST Ibérica S.L.

Soberanía 2, 2ºA - 28260 GUALAPAGAR, MADRID - SPAIN
Javier SÁNCHEZ - (+34) 619 17 45 52 - jsanchez@diagast.com

DIAGAST India

D-304, Sushant shopping Arcade - Sushant Lok I - GURGAON 122001 Haryana
Vipul PATEL - (+91) 97264 02340 - vpatel@diagast.com

ORDER DEPARTMENT

Export

+33 (0)3 20 96 53 79 - orders@diagast.com

France

+33 (0)3 20 96 53 72 - commandes@diagast.com

HOTLINE AND AFTER SALES SERVICE

+33 (0)3 20 96 53 65 - hotline@diagast.com





E.M.[®] TECHNOLOGY

QWALYS[®] 3 EVO

With the E.M.[®] Technology, QWALYS[®] 3 EVO is the only fully-automated system on the market using the magnetization of erythrocytes, a process that no longer requires washing and centrifugation steps. Latest-generation and fully-automated system with high throughput, large loading capacity and STAT function among others, QWALYS[®] 3 EVO is the benchtop instrument for all laboratories, blood banks, blood transfusion centers and hospitals

Designation

QWALYS[®] 3 EVO

QWALYS[®] INSTRUMENT

QWALYS[®] INTERPRETATION SOFTWARE

Reference

90854

90870*

90871*

Description

L = 150 cm / 8 needles

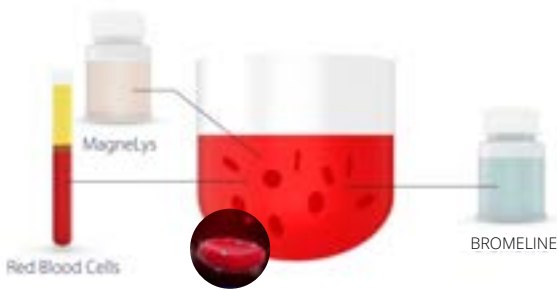
ACCESSORIES

Designation	Reference	Description
QWALYS® Cover	91355	1 Unit
Table QWALYS®	91320	1 Unit
QWALYS® Sample Rack 10mm	90775	6 Units
QWALYS® Sample Rack 13mm	90776	6 Units
QWALYS® Pediatric Rack	90780	1 Unit
QWALYS® CSV Carrier	91364	1 Unit
QWALYS® C6V Carrier	91178	1 Unit
Carrier Barcodes for QWALYS® 3	91333	1 Unit
QWALYS® Liquid System Container	90713	1 Unit
QWALYS® Waste Container	91227	1 Unit
3 Bottles for Weekly Maintenance	91321	1 Unit
Weekly Maintenance Kit	91251	1 Unit

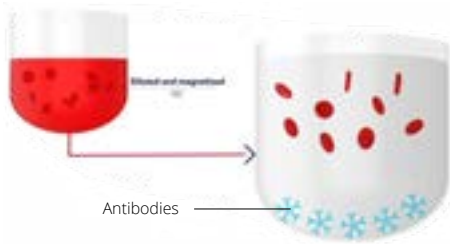


E.M.[®] TECHNOLOGY

GROUPING & PHENOTYPING



1% dilution of RBC in Bromelin & MagneLys.
Dispensing in the microplate



Shaking

Rehydration of antibodies and contact with RBC antigens

Incubation at room temperature



Magnetization

Attraction of RBC by magnetic field to the bottom of the well

Shaking

NEGATIVE
RBC suspension



POSITIVE
RBC agglutination



RESULTS INTERPRETATION

Negative reaction

No Agglutination

Positive reaction

Agglutination

GROUPING & PHENOTYPING

Designation	Reference	Quantity	Configuration
DuoLys <i>12 microplates of 8 tests, MagneLys 40 mL</i>	79960	96 tests	A B AB D C c E e K Ctl □ □
ABD-Lys <i>10 microplates of 16 tests, MagneLys 40 mL</i>	79967	160 tests	A B D Ctl □ □ A B D Ctl □ □
Groupa 2 Lys <i>12 microplates of 8 tests, MagneLys 40 mL</i>	79964	96 tests	A B AB D1 D2 Ctl □ □ □ □ □ □ <i>(DVI-) (DVI-)</i>
Groupa DVI Lys <i>12 microplates of 8 tests, MagneLys 40 mL</i>	79969	96 tests	A B AB D1 D3 Ctl □ □ □ □ □ □ <i>(DVI-) (DVI+)</i>
PhenoLys <i>12 microplates of 16 tests, MagneLys 40 mL</i>	79962	192 tests	C c E e K Ctl C c E e K Ctl
Pheno 1,2 Lys** <i>12 microplates of 8 tests, MagneLys 40 mL</i>	79966	96 tests	C1 c1 E1 e1 K1 Ctl C2 c2 E2 e2 K2 Ctl
Groupa A1 Lys <i>12 microplates of 8 tests</i>	79965	96 tests	A A1 B AB D1 D2 Ctl □ □ □ □ □ □ <i>(DVI-) (DVI-)</i>
DuoLys v2** <i>12 microplates of 8 tests, MagneLys 40 mL</i>	79970	96 tests	A B AB D C c E e K Ctl □ □
ABDVI-Lys v2** <i>10 microplates of 24 tests, 2 MagneLys 40 mL</i>	79990	240 tests	A B D Ctl A B D Ctl A B D Ctl <i>(DVI+) (DVI+) (DVI+)</i>
ABD-Lys v2** <i>10 microplates of 24 tests, 2 MagneLys 40 mL</i>	79991	240 tests	A B D Ctl A B D Ctl A B D Ctl <i>(DVI-) (DVI-) (DVI-)</i>
PhenoLys v2** <i>12 microplates of 16 tests, MagneLys 40 mL</i>	79971	192 tests	C c E e K Ctl C c E e K Ctl
Pheno 1,2 Lys v2** <i>12 microplates of 8 tests, MagneLys 40 mL</i>	79972	96 tests	C1 c1 E1 e1 K1 Ctl C2 c2 E2 e2 K2 Ctl

REVERSE TYPING RED BLOOD CELLS*

HEMALYS 1 A1, B <i>Magnetized RBC A1 & B</i>	59659	2 x 5 mL
	59663	
HEMALYS 1 A1, A2, B, O <i>Magnetized RBC A1, A2, B & O</i>	59661	4 x 5 mL

DILUENTS

BROMELINE	69024	1 x 100 mL
	69860	1 x 100 mL
MagneLys	79900	1 x 40 mL

DILUTION PLATES

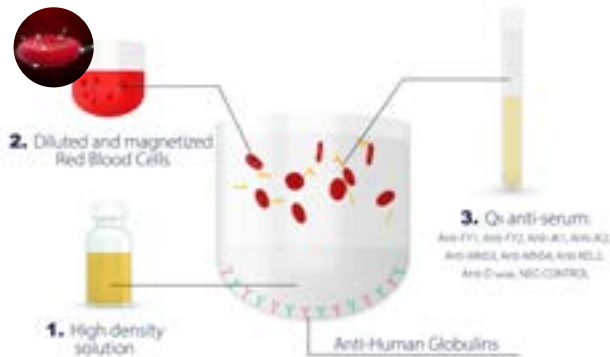
D-Plates <i>10 plates for the RBC dilution on QWALYS®</i>	79851	960 tests
--	-------	-----------

INTERNAL QUALITY CONTROL*

HEMA CQI See details on p°32-	59500	4 x 4 mL
--	-------	----------

E.M.[®] TECHNOLOGY

WEAK-D AND ANTIGENS TYPING



Incubation at 37°C:
Antibodies bind to RBC Antigens



Magnetic shaking
Magnetic field + shaking. The magnetized RBC cross the NanoLys (high density barrier); no influence of the magnetic field on free antibodies that remain isolated at the surface on NanoLys.

No washing step

NEGATIVE
Absence of the antigen



Negative reaction



POSITIVE
Expression of the antigen



Positive reaction



RESULTS INTERPRETATION

Negative reaction

If there is no antigen : No reaction with AHG, the RBC create a dot.

Positive reaction

Antibodies fix the corresponding antigen on the magnetized RBC; Reaction with AHG.

WEAK-D TEST

Designation	Reference	Quantity
QR Anti-D WEAK	20401	1 x 3.5 mL
QR NEG CONTROL	20507	1 x 3.5 mL

Clone	Type	Weak	Variants												
		Type 1, 2, 3	II & DNU	III	IVa	IVb	Va	VI	VII	DCS	DFR	DNB	DAR	DYO or DHK & DAU-4	HMI
P3X35	IgG	+	+	+	+	+	+/-	-	+	+	+/-	+	+	-	+
ESD1	IgG	+	+	+	-	-	+	+	+	+	+	+	+	+	+

ANTIBODY ACTIVITY AGAINST THE D ANTIGEN

+ means a positive result which intensity can vary according to the number of antigenic sites present on the the tested red blood cells.

+/- means that a positive or negative result can be obtained, variable according to the antigenicity.

ANTIGENS TYPING

QR ANTI-Fya (FY1)	20501	1 x 2.3 mL
QR ANTI-Fyb (FY2)	20509	1 x 2.3 mL
QR ANTI-Jka (JK1)	20503	1 x 2.3 mL
QR ANTI-Jkb (JK2)	20504	1 x 2.3 mL
QR ANTI-S (MNS3)	20505	1 x 2.3 mL
QR ANTI-s (MNS4)	20506	1 x 2.3 mL
QR NEG CONTROL	20507	1 x 3.5 mL

CELLANO

QR ANTI-k (KEL2)**	20508	1 x 2.3 mL
QR NEG CONTROL	20507	1 x 3.5 mL

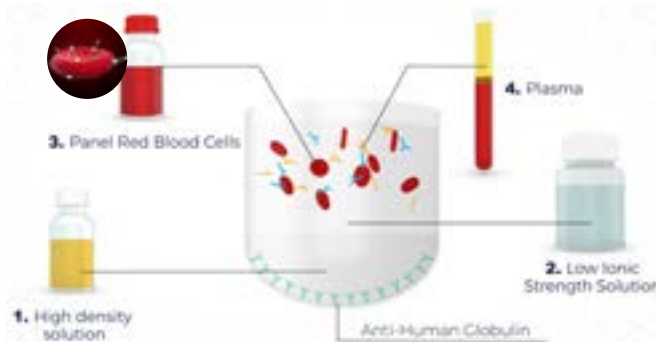
MICROPLATES & ASSOCIATED REAGENTS

Designation	Reference	Quantity	Description	Tests Weak D	Tests AT	Tests Cellano
CrossLys	79854	8 plates	Microplates coated with AHG Anti-IgG + Anti-IgM	384	64	384
NanoLys	69305	8 x 8 mL	Buffer	*	*	*
IRONMAG	20000	16 x 4 mL	Magnetization solution	*	*	*
DiluentLys	69301	1 x 100 mL	Diluent	*	*	*
Mag-Plates	69302	576 tests	12 dilution plates (48 dilutions/plate)	*		*
D-Plates	79851	480 tests	10 dilution plates (48 dilutions/plate)		*	

** Manufacturing on request

E.M.[®] TECHNOLOGY

ANTIBODY SCREENING (Abs)



Incubation

Antibodies bind to Panel Red Blood Cells antigens



Magnetic shaking

Magnetic field + shaking. The Panel Red Blood Cells cross the NanoLys (high density barrier): no influence of the magnetic field on unspecific antibodies. The unspecific globulins remain isolated at the surface of the NanoLys.

No washing step

NEGATIVE
Absence of unexpected Ab

POSITIVE
Presence of unexpected Ab



Negative reaction



Positive reaction

RESULTS INTERPRETATION

Negative reaction: Clear dot

No unexpected antibodies:
No reaction with AHG:
Panel Red Blood Cells creates a dot.

Positive reaction: Layer

Unexpected antibodies fixed on Panel Red Blood Cells: Reaction with AHG.

ANTIBODY SCREENING (AbS)

Designation	Reference	Quantity
ScreenLys <i>6 AHG Anti-IgG coated plates</i> <i>NanoLys (7 x 8 mL), ScreenDiluent (50 mL)</i>	79853	48 tests - Identification 192 tests - Antibody Screening 576 tests - Donor Antibody Screening
ScreenLys Plate <i>6 AHG Anti-IgG coated plates</i>	79861	48 tests - Identification 192 tests - Antibody Screening 576 tests - Donor Antibody Screening

RED BLOOD CELLS PANELS*

HEMASCREEN Pool <i>Pool of magnetized RBC</i>	59550	4 x 4.5 mL
HEMASCREEN <i>Panel of 3 magnetized RBC</i>	59852	3 x 4.5 mL
HEMA-IDENT <i>Panel of 11 magnetized RBC</i>	59855	11 x 4.5 mL
I-Mag Screen <i>Panel of 3 magnetized RBC</i>	59857	3 x 4.5 mL
I-Mag Ident <i>Panel of 11 magnetized RBC</i>	59859	11 x 4.5 mL

REAGENTS

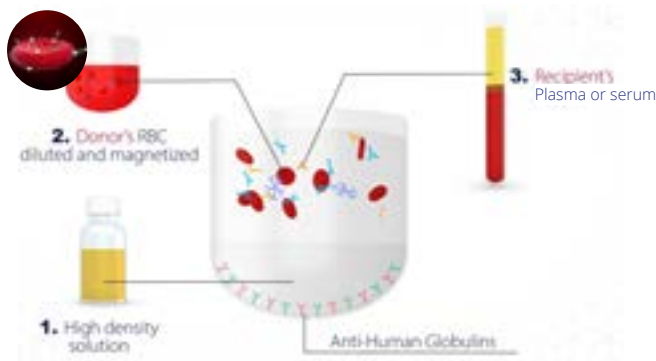
NanoLys	69305	8 x 8 mL
ScreenDiluent	69306	1 x 50 mL
IRONMAG	20000	16 x 4 mL
I-Mag Diluent	69312	1 x 50 mL

INTERNAL QUALITY CONTROL*

SERA CQI See details on p°33	59502	3 x 5 mL
---	-------	----------

E.M.[®] TECHNOLOGY

CROSSMATCH



Incubation

at room temperature and 37°C
Antibodies bind to donor's RBC



Magnetic shaking

Magnetic field + shaking. The magnetized donor's RBC cross the NanoLys (high density barrier); no influence of the magnetic field on unspecific antibodies that remain isolated at the surface of the NanoLys.

No washing step

COMPATIBLE
CAN BE TRANSFUSED



Negative reaction



INCOMPATIBLE
DO NOT TRANSFUSE



Positive reaction



RESULTS INTERPRETATION

Negative reaction: Clear dot

No RBC antibodies:
No reaction with AHG:
Donor's RBC create a dot.

Positive reaction: Layer

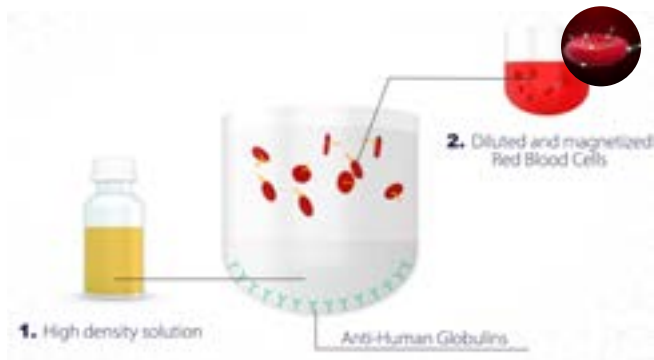
Recipient's antibodies fix donor's RBC
RBC: Reaction with AHG.

CROSSMATCH

Designation	Reference	Quantity
CrossLys <i>8 AHG Anti-IgG & Anti-IgM coated plates</i>	79854	768 tests
DiluentLys	69301	1 x 100 mL
Mag-Plates <i>12 dilution plates (48 dilutions / plate)</i>	69302	576 tests
IRONMAG	20000	16 x 4 mL
NanoLys	69305	8 x 8 mL

E.M.[®] TECHNOLOGY

DIRECT COOMBS



Incubation
at room temperature



Magnetic shaking
Only magnetized RBC go through the NanoLys

NEGATIVE
Non sensitized RBC
in vivo



Negative reaction



POSITIVE
Sensitized RBC
in vivo



Positive reaction



RESULTS INTERPRETATION

Negative reaction: Clear dot
No in vivo sensitization

Positive reaction: Layer
If the RBC have already been sensitized in vivo: reaction with AHG

DIRECT COOMBS

Designation	Reference	Quantity	Configuration
DC-Lys <i>8 AHG coated plates</i>	79300	256 tests	IgG C3d Ctl IgG C3d Ctl IgG C3d Ctl IgG C3d Ctl
DiluentLys	69301	1 x 100 mL	
Mag-Plates <i>12 dilution plates (48 dilutions / plate)</i>	69302	576 tests	
IRONMAG	20000	16 x 4 mL	
NanoLys	69305	8 x 8 mL	

INTERNAL QUALITY CONTROL*

RedQal Direct	59509	2 x 3.3 mL
---------------	-------	------------

[See details on p°33](#)



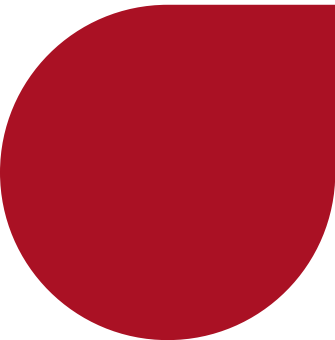
GENERAL CONSUMABLES

CleanLys <i>Decontamination solution for QWALYS®</i>	20700	1 L
Dilution Container	91329	1 unit

* On subscription



PK® RANGE



EXTENDED PHENOTYPING

For PK7400 use

Designation	Reference	Quantity	Clones
ANTI-Fya (FY1) PK	73020	20 mL	DG-FYA-02
ANTI-Fyb (FY2) PK	73021	20 mL	SpA264LBg1
ANTI-Jka (JK1) PK	73022	20 mL	P3HT7
ANTI-Jkb (JK2) PK	73023	20 mL	P3.143
ANTI-M (MNS1) PK	73070	20 mL	SpE55Bh6
ANTI-N (MNS2) PK	73071	20 mL	SpL144Kc7
ANTI-S (MNS3) PK	73024	20 mL	P3S13JS123
ANTI-s (MNS4) PK	73025	20 mL	P3YAN3
ANTI-s (MNS4) PK	73032	20 mL	P3BER

ASSOCIATED REAGENTS

NEG CONTROL PK	73026	20 mL	Negative control
AHG ANTI-IgG PK	73028	20 mL	18833 + 18896
LISS PK	73029	900 mL	Low Ionic Strength Solution

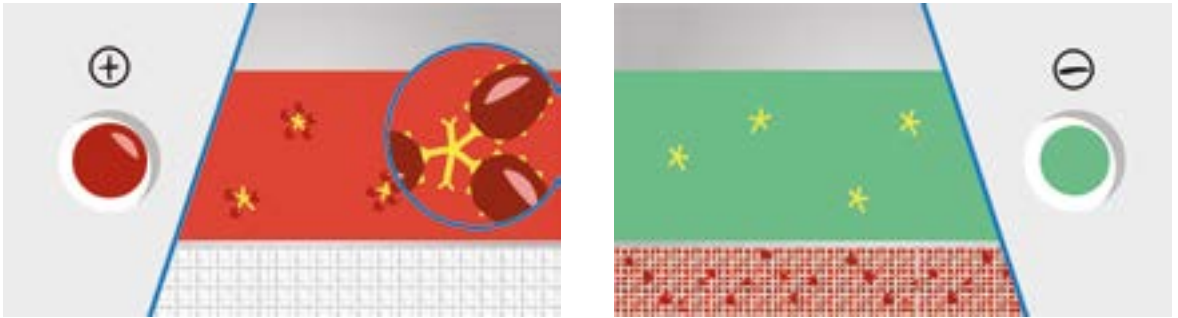
TABLE OF REAGENTS

	Fya	Fyb	Jka	Jkb	M	N	S	s	s	Control
Clone	DG-FYA-02	SpA264LBg1	P3HT7	P3.143	SpE55Bh6	SpL144Kc7	P3S13JS123	P3YAN3	P3BER	NA
Ig Class	IgG	IgM	IgM	IgM	IgM	IgM	IgG	IgG	IgM	NA
AHG ANTI-IgG PK	X						X	X		+ / -

With the vial of 20 mL you can perform 675 tests

M-TRAP[®] TECHNOLOGY

M-TRAP[®] technology is based on the immobilization of antibodies bounded to a porous membrane. Only the red blood cells having the corresponding antigen are fixed into the membrane revealing immediately the reaction.



ABD PAD[®] Procedure



1 - ACTIVATION

One drop of buffer is dispensed to hydrate the reactive zone.



2 - BLOOD DISPENSING

The blood sample is added into the well.



3 - REVELATION

The well is filled with the buffer to reveal the reaction.

RESULTS INTERPRETATION

Positive



Negative



ABD PAD®

ABD PAD® allows the control of the ABO/RhD blood group (confirmation or pre-donation control), by determining the presence or absence of the A, B and D erythrocytic antigens on the surface of human red blood cells.

Designation

ABD PAD®
 PAD Buffer
 PAD Buffer 500

Reference

40102
 40100
 40104

Quantity

10 x 20 tests (200 tests)
 5 x 50 mL
 1 x 500 mL

ASSOCIATED MATERIAL

Zip bags

119422

500



BEDSIDE CARD

ABTEST CARD®

ABTest Card® is a bedside card based on the principle of M-TRAP® technology, by fixing red blood cells on porous membrane that contains Anti-A and Anti-B antibodies, holding RBC with the corresponding Antigen. Negative results give a clear green signal and the positive results are red.

Designation	Reference	Quantity
ABTest Card®	79070	100 kits
ABTest Card® EN-DE	79090	100 kits
ABTest Card® ES-PT	79100	100 kits

1 x ABTest Card® + 1 x vial of washing solution + 1 safety lancet + 1 x blood segment opener



PROTOCOL IN 4 STEPS



1

ACTIVATION



2

BLOOD DEPOSIT



3

REVELATION



4

READING

ABTEST MULTI

Device for emergency and massive transfusion. Minimum 3 Red Blood Cells units for the same patient. Shelf life after opening: 1h

Designation

ABTest MULTI

Reference

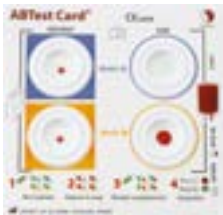
79080

Quantity

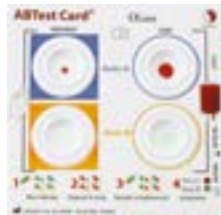
25 kits (3 tests/card)

1 x ABTest MULTI + 2 x vials of washing solution + 1 safety lancet + 3 x blood segment opener

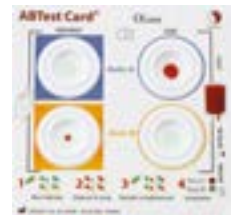
EXAMPLES OF REACTIONS



According to the ABO compatibility rules, **transfusion may proceed: compatible**

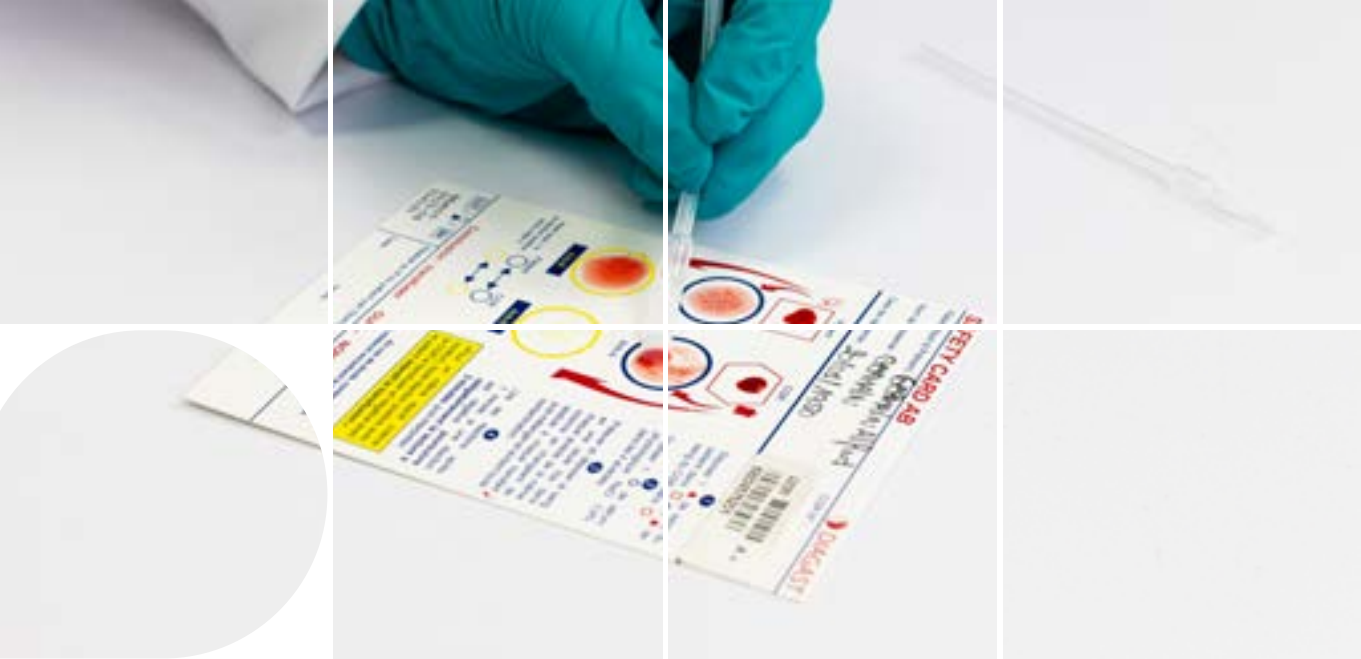


According to the ABO compatibility rules, **transfusion may proceed: compatible**



According to the ABO compatibility rules, **transfusion may not proceed: incompatible**





SAFETY CARD

The procedure is based on haemagglutination's principles. Red blood cells carry antigens and agglutinate in the presence of test sera (reagents) carrying corresponding antibodies (coloured reagents are dried out on the card's wells).

Designation

SAFETY TEST ABO

Reference

79069

Quantity

100 kits

1 SAFETY CARD AB + 1 SAFETY PACK (1 safety lancet + 1 blood segment opener + 1 vial of isotonic saline solution + 4 stirrer-pipettes)

SAFETY CARD AB (Deutsch)

79076

100 cards

SAFETY CARD AB (Latvian)

79075

100 cards

SAFETY CARD AB (French)

79074

100 cards



PROTOCOL IN 4 STEPS



1
CONTROL AND IDENTIFICATION



2
PREPARATION

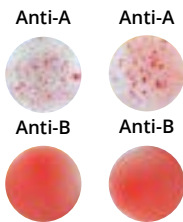


3
TEST

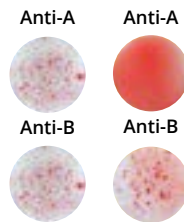


4
INTERPRETATION AND VALIDATION

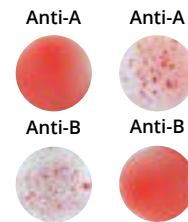
EXAMPLES OF REACTIONS



According to the ABO compatibility rules, **transfusion may proceed: compatible**



According to the ABO compatibility rules, **transfusion may proceed: compatible**

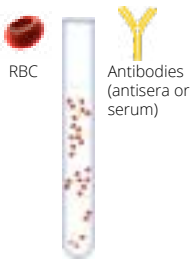


According to the ABO compatibility rules, **transfusion may not proceed: incompatible**

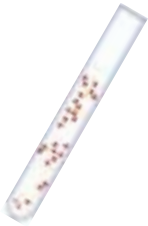


MANUAL RANGE

HEMAGGLUTINATION



Mix of Red Blood Cells suspension with antisera



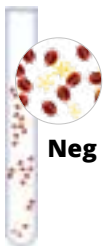
Shaking
homogenization of the suspension



Centrifugation

Reading & Interpretation

Gentle shaking and reading

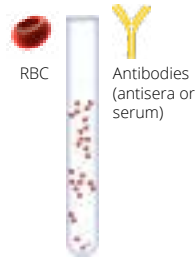


No agglutination



Agglutination

INDIRECT ANTIGLOBULIN TEST

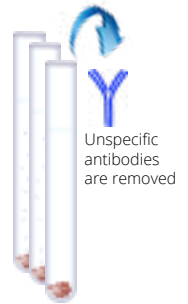


Mix of RBC and antibodies

Incubation
at 37°C



Washing



AHG dispensing

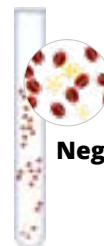


Centrifugation



Reading & Interpretation

Gentle shaking and reading



No agglutination



Agglutination



GROUPING

Designation	Reference	Quantity	Clones
ANTI-A (ABO1)	70501	5 x 10 mL	9113D10
	70540	100 x 10 mL	9113D10
ANTI-B (ABO2)	70502	5 x 10 mL	9621A8
	70541	100 x 10 mL	9621A8
ANTI-AB (ABO3)	70503	5 x 10 mL	152D12 + 9113D10
	70542	100 x 10 mL	152D12 + 9113D10
NEG CONTROL	79000	5 x 10 mL	Negative control
ANTI-A1 (ABO4)	71025	1 x 5 mL	Lectin
ANTI-H	71026	1 x 2 mL	Lectin

GROUPING KIT

GROUPAKIT 70888 5 x 10 mL 9113D10, 9621A8, 152D12, 9113D10, P3X61
Includes ANTI-A (ABO1), ANTI-B (ABO2) ANTI-AB (ABO3), ANTI-D (RH1) IgM I, NEG CONTROL



● READY-TO-USE RBC (5%)*

Designation	Reference	Quantity	Clones
HEMATEST A1, B	58950	2 x 5 mL	
HEMATEST A1, A2, B, O	51999	4 x 5 mL	

● INTERNAL QUALITY CONTROL*

HEMA CQI	59500	4 x 4 mL	
----------	-------	----------	--

[See details on p°32](#)

● OUR MOST COMPLETE ANTI-D

ANTI-D (RH1) TOTEM	71010	5 x 10 mL	P3X61 + P3X21223B10 + P3X290 + P3X35
	70544	100 x 10 mL	

2 clones IgM, 2 clones IgG

Weak D detection in tube and slide techniques at room temperature

Weak D detection in IAT (Indirect Antiglobulin Test)

Detection of the most frequent partial D (DVI) at room temperature

● WEAK-D DETECTION

ANTI-D (RH1) IgG	71020	5 x 10 mL	HM16
------------------	-------	-----------	------

I.A.T (Indirect Antiglobulin Test)

● COMPLEMENTARY REAGENTS

ANTI-D (RH1) IgM I	71000	5 x 10 mL	P3X61
ANTI-D (RH1) IgM II	71005	5 x 10 mL	HM10



IDENTIFICATION KIT FOR PARTIAL RHESUS D

For research use only

Designation **Reference** **Quantity** **Clones**
 D-SCREEN 71194 9 x 2 mL See table below
Kit of 9 monoclonal ANTI-D for identification of partial D: 5 IgG and 4 IgM (Frozen)

			PARTIAL D										
N°	Clone	Type	II	IIIa, IIIb, IIIc	IVa	IVb	Va	VI	VII	DFR	DBT	Rohar	HMI
1	HM10	IgM	+	+	+	+	+	-	+	-	+	-	+
2	HM16	IgG	+	+	+	+	+	-	+	-	+	+	+
3	P3x61	IgM	+	+	+	+	+	-	+	±	+	+	+
4	P3x35	IgG	+	+	+	+	-	-	+	-	-	-	+
5	P3x21211F1	IgM	+	+	+	+	+	-	-	-	+	-	-
6	P3x21223B10	IgM	-	+	-	-	+	+	+	+	-	-	+
7	P3x241	IgG	+	+	+	+	-	-	+	±	-	-	+
8	P3x249	IgG	+	+	-	-	+	-	+	+	-	-	+
9	P3x290	IgG	+	+	±	-	+	±	+	+	-	-	+

+ indicates a positive result whose intensity may vary as a function of the number of antigen sites present on the test red blood cells.

+/- indicates that a positive or negative result may be obtained. The result depends on the antigenicity



RH-KELL PHENOTYPING

Designation	Reference	Quantity	Clones
ANTI-C (RH2)	74221	4 x 5 mL	P3X25513G8 + MS24
ANTI-E (RH3)	74311	4 x 5 mL	906
ANTI-c (RH4)	74011	4 x 5 mL	951
ANTI-e (RH5)	74611	4 x 5 mL	P3GD512 + MS63
ANTI-K (KEL1)	74711	4 x 5 mL	MS56
ANTI-DCE (RH1,2,3)	74111	5 x 5 mL	P3X61 + P3X25513G8 + P3X234
NEG CONTROL	79000	5 x 10 mL	Negative control

RH-KELL PHENOTYPING KIT

PHENOKIT 74911 5 x 5 mL See clones above

Includes ANTI-C (RH2), ANTI-E (RH3) ANTI-c (RH4), ANTI-e (RH5), ANTI-K (KEL1)



All clones above are IgM type

EXTENDED PHENOTYPING

Designation	Reference	Quantity	Clones	Type
ANTI-Cw (RH8)	78013	1 x 3 mL	MS110	IgM
ANTI-Fya (FY1)	78014	1 x 3 mL	DG-FYA-02	IgG
ANTI-Fyb (FY2)	78015	1 x 3 mL	SpA264LBg1	IgM
ANTI-Jka (JK1)	78003	1 x 3 mL	P3HT7	IgM
ANTI-Jkb (JK2)	78004	1 x 3 mL	P3.143	IgM
ANTI-M (MNS1)	78005	1 x 3 mL	2514E6	IgG
ANTI-N (MNS2)	78006	1 x 3 mL	1422C7	IgG
ANTI-S (MNS3)	78007	1 x 3 mL	P3S13JS123	IgG
ANTI-s (MNS4)	78008	1 x 3 mL	P3YAN3	IgG
ANTI-Lea (LE1)	78009	1 x 3 mL	13643B9	IgM
ANTI-Leb (LE2)	78010	1 x 3 mL	GX336	IgM
ANTI-P1	78011	1 x 3 mL	650	IgM
ANTI-k (KEL2)	78016	1 x 3 mL	P3A118OL67	IgG
NEG CONTROL	79000	5 x 10 mL	Negative control	
ANTI-Kpa (KEL3)	78017	1 x 2 mL	Polyclonal reagent	
ANTI- Kpb (KEL4)	78018	1 x 2 mL	Polyclonal reagent	
ANTI-Lua (LU1)	78019	1 x 2 mL	Polyclonal reagent	
ANTI-Lub (LU2)	78021	1 x 2 mL	Polyclonal reagent	



INDIRECT / DIRECT ANTIGLOBULIN TESTS

Designation	Reference	Quantity	Clones
AGH MAESTRIA C3D	76118	4 x 5 mL	12011D10
AGH MAESTRIA IGG	76218	4 x 10 mL	18833 + 18896
AGH MAESTRIA IGG + C3D	76318	4 x 10 mL	18833 + 18896 + 12011D10

ENZYMES - BUFFER

PALERM Papain	69015	1 x 10 mL	Ready-to-use papain
LISS	69013	1 L	Low Ionic Strength Solution (L.I.S.S.)
Bovine Albumin 30%	69000	1 x 10 mL	
Bovine Albumin 22%	69003	1 x 10 mL	

ASSOCIATED MATERIAL

Vials holder	91347	1 unit
--------------	-------	--------

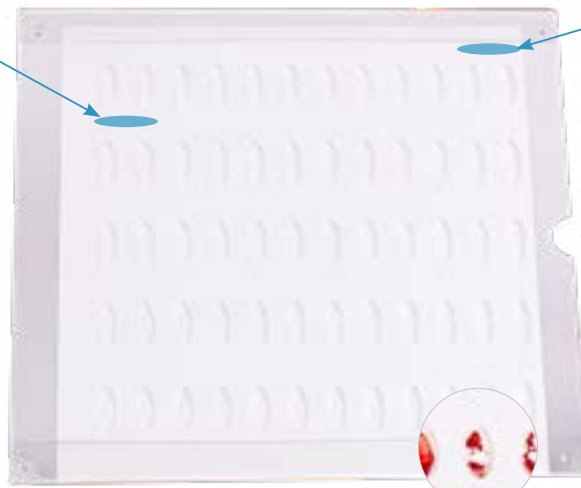


MANUAL PLATE

Disposable white plates for grouping, reverse typing and phenotyping

Blood sample identification area

Anti-sera identification area



Oval-shaped wells

Mix of Red Blood Cells suspension with antisera

Gentle shaking



Reading & Interpretation

No agglutination

Agglutination



Designation

MANUAL PLATE 12

Reference

90232

Quantity

20 tests

Recommended application

ABD confirmation

5 tests ABO-RhK determination

MANUAL PLATE 9

90229

5 tests

Blood grouping

MANUAL PLATE 7

90227

5 tests

Blood grouping

MANUAL PLATE 6

90226

5 tests

Phenotyping

MANUAL PLATE 5

90225

5 tests

Blood grouping control

ASSOCIATED MATERIAL

MANUAL TRAY

90255

Adaptable for all Manual Plate configuration

Vials holder

91347

1 unit



QUALITY CONTROLS

INTERNAL QUALITY CONTROLS

ABO-D typing & Rhesus-Kell

Designation

HEMA CQI*

All methods except PK devices

Reference Quantity

59500 4 x 4 mL

RedQal Group*

Dedicated to PK devices

CQI02 4 x 5.5 mL

DESIGNATION	GROUP	PHENOTYPING		ANTIBODIES	
HEMA CQI 1	AB	D- C- E- c+ e+	RH -1, -2, -3, 4, 5	K-	KEL -1
HEMA CQI 2	B	D+ C+ E- c- e+	RH 1, 2, -3, -4, 5	K-	KEL -1
HEMA CQI 3	O	D+ C+ E+ c+ e+	RH 1, 2, 3, 4, 5	K+	KEL 1
HEMA CQI 4	A	D+ C- E+ c+ e-	RH 1, -2, 3, 4, -5	K-	KEL -1
					Anti-A (ABO1)
					Anti-B (ABO2)

Antibody Screening

SERA CQI	59502	3 x 5 mL
<i>Only for E.M.® Technology</i>		
ABS CQI**	59507	3 x 5 mL
<i>For microfiltration method in indirect antiglobulin test</i>		

Direct Antiglobulin Test (All methods)*

RedQal Direct	59509	2 x 3.3 mL
---------------	-------	------------



EXTERNAL QUALITY CONTROLS

Subscription to the External Quality Assessment program

Do you need further assistance in your accreditation process? DIAGAST works with U.C.I.L (Interlaboratory Comparison Unit) and proposes you 4 External Quality Assessment campaigns per year.

Designation	Reference	Composition
EEQ01 + EEQ07	59511	Grouping ABO-RH1 and Phenotyping RH-KEL1 Antibody Screening
EEQ34	59512	Direct Antiglobulin Test
EEQ02	59513	Extended phenotyping FY1,2 ; JK1,2 ; MNS3,4 Antigen Typing RH8 ; KEL2,3,4 ; MNS1,2 ; LE1,2 ; P1 ; LU1,2 ; A1 ; H
EEQ08	59514	Crossmatch
EEQ09	59515	Elution
EEQ10	59516	Antibody Titration

All controls are available regardless of the used technique.
For additional information, please contact eeq@diagast.com

* On subscription ** IVDR references for CE market



 **DIAGAST**
Impulse Life



www.diagast.com

DIAGAST - 251 avenue Eugène Avinée - 59120 Loos - FRANCE +33 3 (0)20 96 53 53